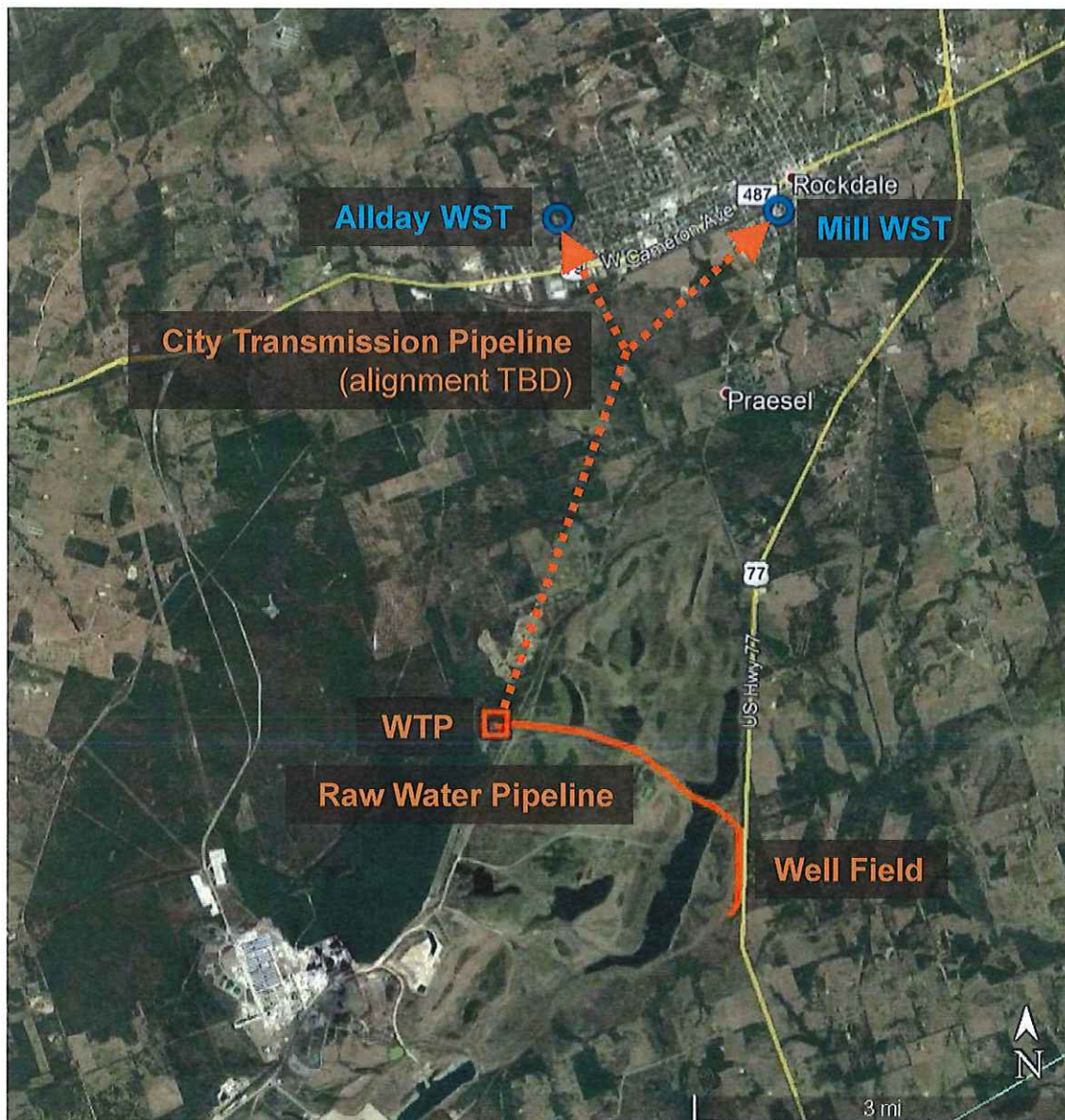


Rockdale Water Supply Project



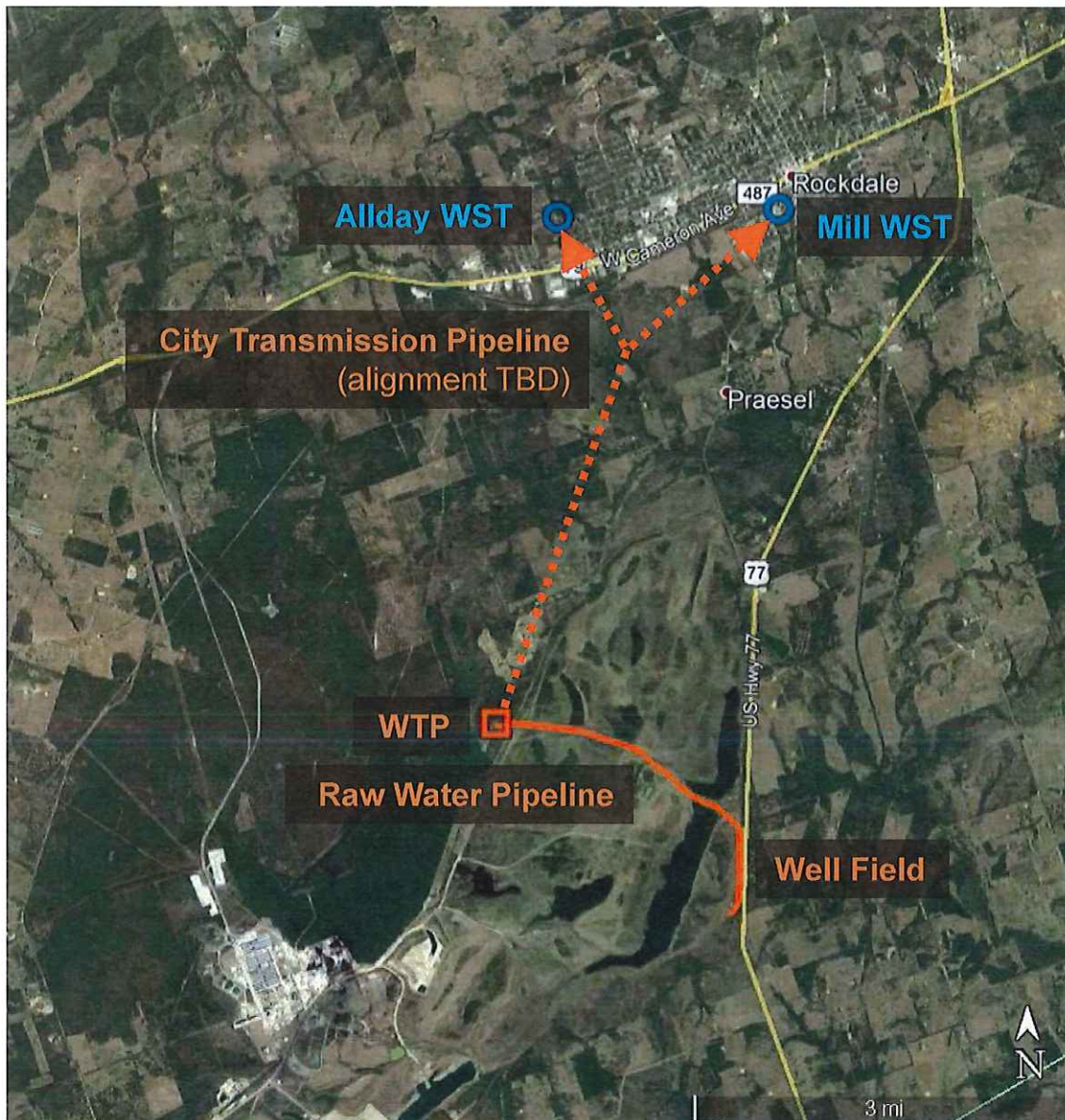
May 2019

Indicative Proposal



Fee Component	Price per Kgal
Capital Recovery	\$3.71
Groundwater Permit Fee	\$0.01
Fixed O&M	\$0.42
<hr/>	
Subtotal - Fixed Fee	\$4.14
Water Rights	\$0.47
Variable O&M	\$0.59
<hr/>	
Subtotal - Variable Fee	\$1.06
<hr/>	
Total Indicative Price	\$5.20

Indicative Proposal



Benefits to City of Rockdale

- Single point of responsibility
- Transfer of all risk for water supply cost and compliance
- Performance-based payment contract
- Long-term, local partner with water treatment as a core business
- City bonding capacity retained for distribution system upgrades

Indicative Schedule

Task and Milestone	Duration (months)	2019				2020				2021				2022				...
		Q1	Q2	Q3	Q4	Q1	Q2	Q3	Q4	Q1	Q2	Q3	Q4	Q1	Q2	Q3	Q4	
City Solicitation	4																	
Indicative Bid, Interview and Selection	2																	
EPCOR Due Diligence	3																	
Binding Bid																		
Contract Negotiations	3																	
Commercial Close																		
Design and Construction	24																	
Commercial Operation Date (COD)																		
Operations	360																	

About EPCOR



EPCOR Value

Corporate Commitment

- Zero-injury culture
- Environmental responsibility
- Service reliability
- Trusted developer and operator

Business Approach

- Experienced management team
- Customer focused
- Creative technical and financial solutions

Financial Strength

- Disciplined approach to business development and capital placement
- Comprehensive risk management
- Exceptionally strong balance sheet
- Credit Rating (DBRS): A(low), stable



EPCOR Water Experience

EPCOR Assets and Services in U.S.	Number
-----------------------------------	--------

Scope of Operations (water-related services)

Customer connections:	215,000
Certified operators:	163
Managed water supply (acft/yr):	233,532
Formal Notices of Violations:	0

Vertical Assets (supply & treatment)

Groundwater production wells:	198
Storage tanks and reservoirs:	120
Groundwater treatment plants:	59
Surface water treatment plants:	5

Horizontal Assets (distribution & collection)

Water main pipeline (miles):	3,185
Wholesale water pipeline (miles):	196
Pump stations:	63
Sewer main pipeline (miles):	728





EPCOR

Michael Irlbeck

Director, Business Development

EPCOR Services Inc.

Mirlbeck@epcor.com

512.851.7565

EPCOR