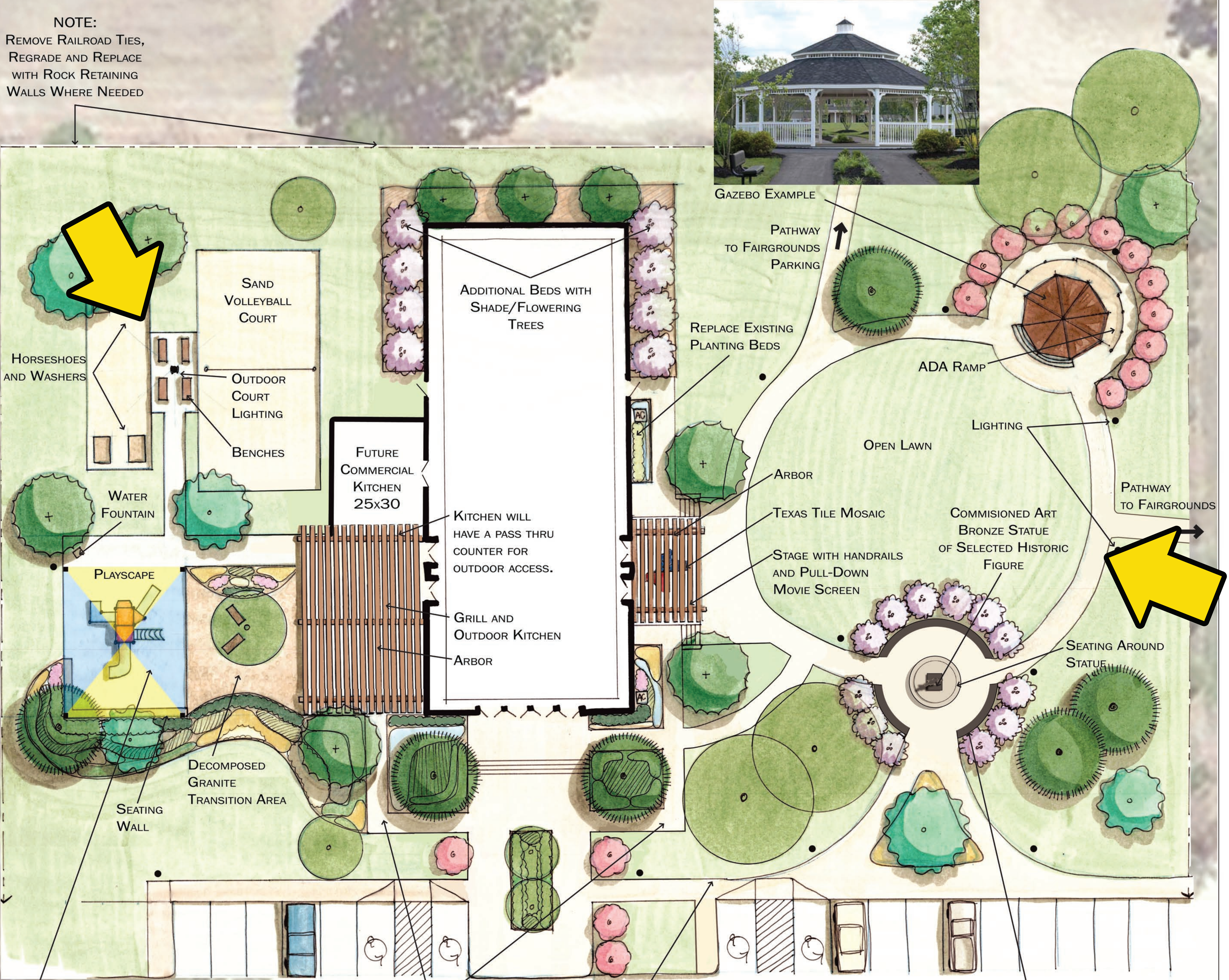


NOTE:  
REMOVE RAILROAD TIES,  
REGRADE AND REPLACE  
WITH ROCK RETAINING  
WALLS WHERE NEEDED



SHADE SYSTEMS EXAMPLE



SUGGESTED  
REALIGNMENT OF  
ADA RAMPS

NOTE:  
REMOVE RAILROAD TIES  
AND REGRADE TO  
ACCOMMODATE SIDEWALK  
EXTENSION AND ENTRY TO  
HISTORIC COURTYARD.



ENSCRIBED PAVERS  
DOCUMENTING HISTORIC  
MOMENTS, TIMELINE, KEY  
PLAYERS IN THE  
COMMUNITY, ETC.



AMAZON.COM  
PULL DOWN PROJECTOR  
SCREEN CELLING  
INSTALLATION DESIGN  
100" INCH TO BE  
MOUNTED AT WEST ARBOR

GENERAL NOTES:

- THE SITE NEEDS TO BE REGRADED FOR PROPER DRAINAGE.
- ONCE PLAN IS ESTABLISHED, A PROPER IRRIGATION SYSTEM FOR SITE NEEDS TO BE INSTALLED.
- SITE LACKS A "SENSE OF ARRIVAL". SUGGESTIONS FOR THE ENTRY SPACE INCLUDE:
  - PLANTING BEDS AT MAIN ENTRY SIGN
  - PLANTING/SHADE TREES ALONG THE ENTRY DRIVE
- SUGGESTED STREETScape IMPROVEMENTS ALONG S. TRAVIS STREET INCLUDE:
  - ESTABLISHMENT OF PEDESTRIAN SIDEWALKS FROM HWY79.
  - ESTABLISHMENT OF SHADE TREES ALONG S. TRAVIS
  - RESTORATION OF INDIVIDUAL HOMES CURBSIDE APPEAL
  - INTEGRATION OF "HISTORIC WALK" WITH USE OF PAVERS

PLANTING AT  
GEORGE HILL PATTERSON  
COMMUNITY CENTER  
ENTRY SIGN

MILL AVENUE



0 5 10 20 30 50  
ARCHITECTURE SCALE: 3/32" = 1'-0"